

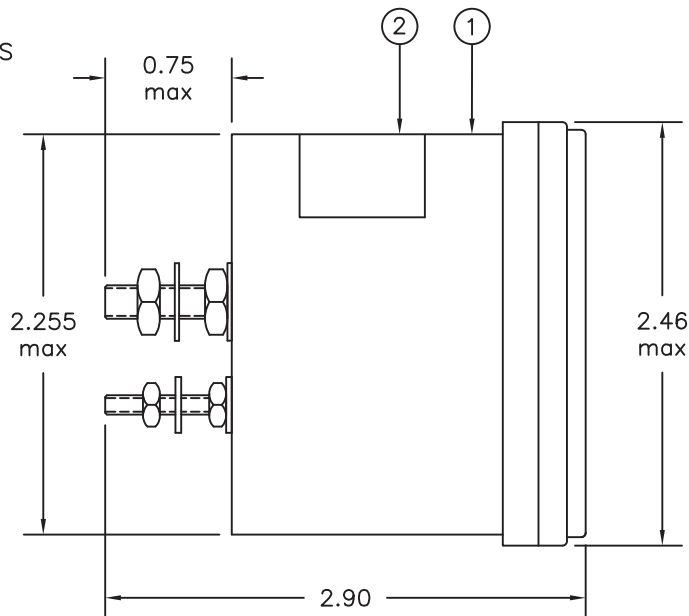
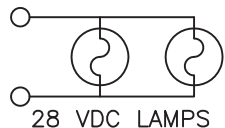
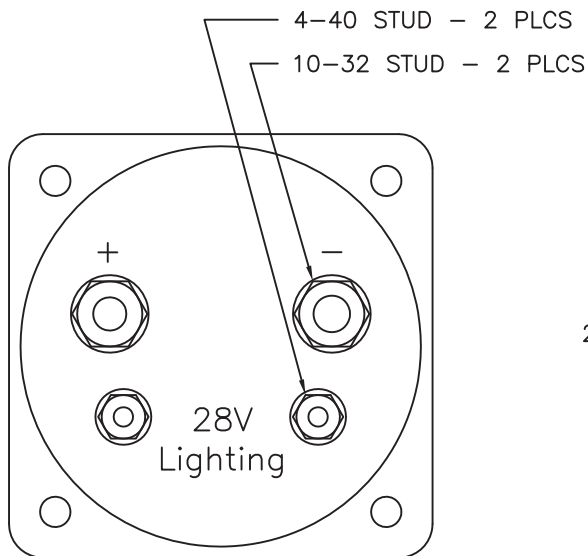
Configuration

Dash #	Assembly	Nameplate	Lighting	Beech Spec
-1	8012023-7	6017271	28V blue/white	109-384001-1
-2	8012023-13	6017578	28V NVIS green	N/A

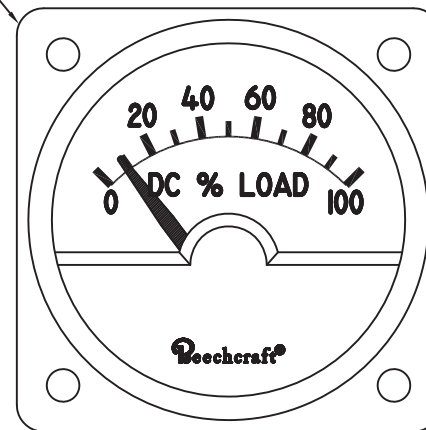
Revisions

ECO	Rev.	Description	Date	Approved
446	A	Drawing no. MD117 was 1010598, add case dimensions.	10/21/96	JW
	B	Completely redraw in ACAD.	06/12/97	Sch
1106	C	Add nameplate.	06/14/99	JBR
5173	D	Add BOM, configuration table, and -2 config.	03/05/09	BAW/MKN

Logo and company name have been changed in title block only. No functional or technical changes have been made. Revision remains unchanged.



Case in accordance with MS33638 for 2 inch size.



Notes:

- 1) The MD117-1 Electrical Load Indicator conforms to Beech Spec. Control Dwg. 109-384001-1.
- 2) The range shall be 0 to 100% over a 90° arc.
  - a) Full scale current for percent load shall be 3.0 ±0.5 mA.
- 3) Weight is 0.5 lbs.
- 4) For -1: Indicator shall contain integral 28 VDC blue-white lighting using MIL-L-27160 as a guide. For -2: Indicator shall contain integral 28VDC NVIS Green A lighting compliant to MIL-L-85762A and MIL-STD-3009.
- 5) Dial shall be matte white on a flat black background. Indicating portion of pointer is matte white.
- 6) Functional and Environmental tests to be in accordance with Beech Spec. 101-389022.

Item	Qty	Part Number	Description
1	1	See Config	Assembly, MD117
2	1	See Config	Nameplate

UNLESS OTHERWISE SPECIFIED, ALL DIMENSIONS ARE IN INCHES.  
 TOLERANCE:  
 FRACTIONAL=±1/64  
 .XX=±0.015  
 .XXX=±0.005  
 .XXXX=±0.002  
 ANGULAR=±0.5°  
 CONCENTRICITY: 0.005 TIR  
 BREAK ALL SHARP EDGES  
 THREADS PER MIL-S-7742

DRAWN:  
 J. Long  
 6/12/97

APPROVED:  
 SH  
 6/12/97

This document discloses proprietary information of Mid-Continent Instrument Co. It may be reproduced or disclosed only with written permission of Mid-Continent Instrument Co. and is not to be used in any way detrimental to the interests of Mid-Continent Instrument Co.



TITLE: Indicator, Load Electrical		PART NUMBER: MD117
SCALE: None	DO NOT SCALE THIS DRAWING	SHEET 1 of 1