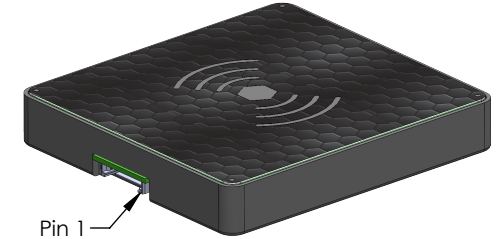
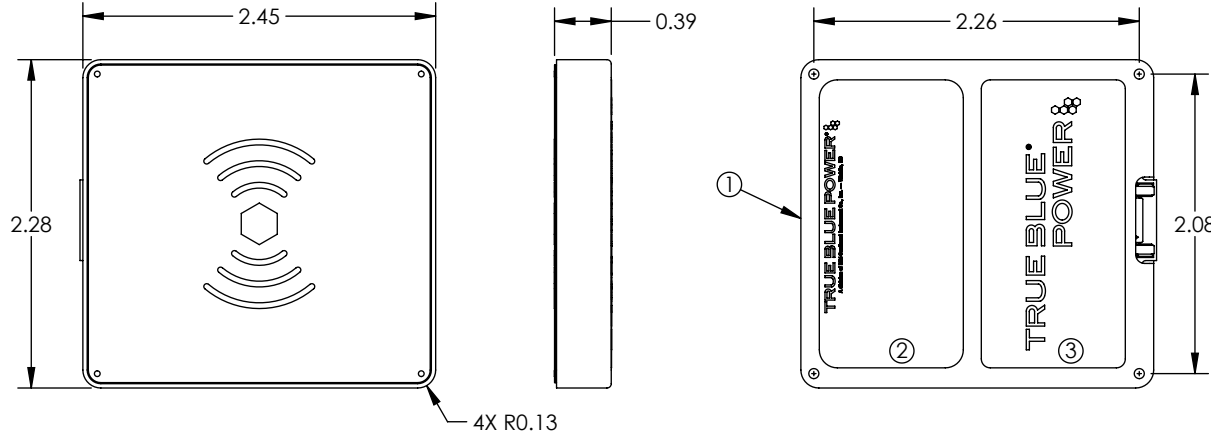


Configuration			
Dash #	Assy, TWC15	Nameplate	Status
6430015-1	9019621-1	9019701-1	Discontinued
6430015-2	9019696-1	9019701-2	Discontinued
6430015-3	9019690-1	9019701-3	Discontinued
6430015-21	9019696-2	9019701-21	Active
6430015-22	9019696-3	9019701-22	Active

Revision				
ECO	Rev.	Description	Date	Approved
		See obsolete drawing for revision history.		
7484	B	Revised dimensions for thickness.	05/17/22	MEK/MKN
7752	C	Added -21 and -22.	05/02/24	MEK/MKN
7757	D	Added status column to config, remove -1, -3 images. Discontinued -1, -2, and -3 as of ECO date.	05/14/24	MEK/Sch



-21 and -22 Configuration



-21/-22 Configuration shown

Specifications	
Model Number	TWC15
Input	12-32 VDC, 26W Max
Output	15W Max, wireless
Qualification	FAATSO-C71 RTCA DO-160G (See Installation Manual)
Case	Anodized Aluminum, Black
Mating Connector Kit	9019739-1
Specified weight	6430015-1 4.0 oz (113 g) 6430015-2, -21 and -22 4.0 oz (113 g) 6430015-3 7.0 oz (198 g)
Installation Manual	9019726 (-1, -2, & -3), 9020158 (-21 & -22)

Connector Pinout	
1	12-32 VDC Input
2	Ground
3	Status
4	Enable

Item	Qty	Part Number	Description
1	1	See Config	Assy, TWC15
2	1	See Config	Nameplate, Wireless, TWC15
3	1	9019725-1	Label, TBP, Compact

UNLESS OTHERWISE SPECIFIED, ALL DIMENSIONS ARE IN INCHES.
TOLERANCE:
FRACTIONAL=±1/64
.XX=±0.015
.XXX=±0.005
.XXXX=±0.002
ANGULAR=±0.5°
WEIGHT N.T.E. +5%
BREAK ALL SHARP EDGES
THREADS PER MIL-S-7742

DRAWN:
MEK
02/08/2022

APPROVED:
Sch
02/09/2022

This document discloses proprietary information of Mid-Continent Instrument Co., Inc. It may be reproduced or disclosed only with written permission of Mid-Continent Instrument Co. and is not to be used in any way detrimental to the interests of Mid-Continent Instrument Co., Inc.

TITLE:
Charger, Wireless, 15W

SCALE: NONE DO NOT SCALE THIS DRAWING

TRUE BLUE POWER
A division of Mid-Continent Instrument Co., Inc.

PART NUMBER:
6430015

SHEET: 1 of 1