

# Service Bulletin

SB 4300-XXX-01

## **Electric Attitude Indicator**

4300 Series

Modification 1

Improves circuit reliability

### **1. PLANNING INFORMATION**

A. Effectivity:

This service bulletin is applicable to 4300 Series Electric Attitude Indicators manufactured by Mid-Continent Instrument Co., Inc. It applies to units manufactured prior to November 1, 2004, serial numbers previous to L04-XXXXX.

B. Reason:

To improve circuit reliability under certain high voltage conditions.

C. Description:

This service bulletin replaces the 4300 Pump PCB Assembly, P/N 9015638 Rev. H and previous.

D. Compliance:

This modification is highly recommended.

E. Approval:

FAA and TSO approval not affected.

F. Manpower:

.25 man-hours, not including testing.

G. Material – Cost and Availability:

The parts and materials necessary to accomplish this service bulletin are available from Mid-Continent Instruments, Inc. Refer to Section 3, Material Information for part numbers. Check for current pricing.

H. Tooling:

No special tooling required.

I. Weight and Balance:

No change.

J. Electrical load data:

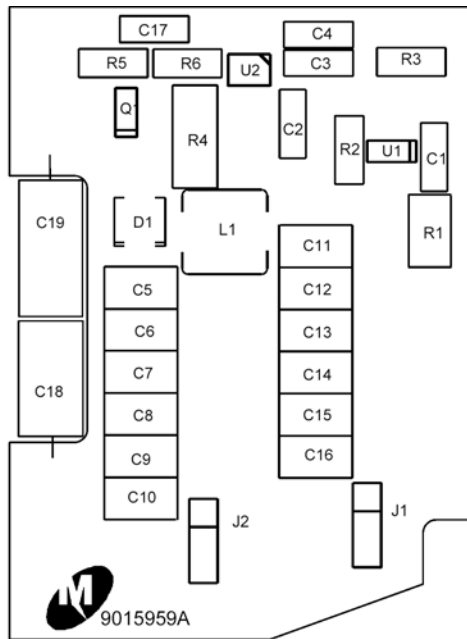
No change.

K. Other Publications affected:

None.

**2. ACCOMPLISHMENT INSTRUCTIONS:**

- A. Refer to the 4300-XXX Component Maintenance Manual for part locations and disassembly instructions.
- B. Refer to Figure 1 of this Service Bulletin for a physical identification of the 4300 Pump PCB Assembly, Modification 1.
- C. Remove and replace the old 4300 Pump PCB Assembly.
- D. Assemble unit and perform the tests called out in the 4300-XXX Component Maintenance Manual (page 201, Testing and Fault Isolation).
- E. Using permanent black ink, mark out block 1 on the modification section of the mfg. nameplate.



**4300 Pump PCB Assembly, Modification 1**  
**Figure 1**

**3. MATERIAL INFORMATION**

Parts:

New P/N	Qty.	Description	Old P/N	Disposition
9015638-1	1	PCB Assy., 4300 Pump (For units with no battery)	9015638-1 Rev. H and previous.	Discard
9015638-2	1	PCB Assy., 4300 Pump (For units with battery)	9015638-2 Rev. H and previous.	Discard