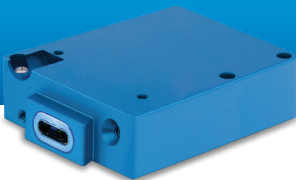


# TRUE BLUE POWER®

A division of Mid-Continent Instrument Co., Inc.

## PLUG IN & **POWER UP**

Certified in-seat, cabin, cockpit and galley USB power



# USB Charging Power TO THE MAX

---

## **MAX Power** TA360 USB Chargers

Upgrade your aircraft with the fastest charging, highest power USB chargers. New **MAX Power** charging ports feature the latest USB-PD technology with variable voltage output. They provide the maximum power needed for each device, delivering 60 watts of True Blue Power per port — that's 4x more power than traditional chargers.



- + Up to 120 watts
- + USB-A and USB-C (PD) connectors
- + Single and dual configurations
- + Lighted and non-lighted
- + FAA / EASA TSO certified
- + Limited Lifetime Warranty

Compatible with traditional USB and USB-PD electronic devices







# MORE POWER MORE DEVICES

---

## High Power TA202 USB Chargers

Pilots and passengers stay charged and connected with **High Power** charging ports. These ultra-compact chargers are easy to install and leave a small footprint. Single and dual USB-A and USB-C configurations provide up to 30 watts and protect against short circuit, power surges and temperature overload.

- + Up to 30 watts
- + USB-A and USB-C connectors
- + Single and dual configurations
- + Lighted and non-lighted
- + FAA / EASA / CAAC TSO certified
- + Limited Lifetime Warranty







# TIME & ENERGY

## CHRONOS

### CH93MAX Digital Clock / USB Charger

The **CHRONOS CH93MAX** digital clock combines time-keeping and USB charging power in one essential unit.

The six-digit, LED clock features external lighting control and a built-in photocell for automatic dimming. **MAX Power** USB charging ports simultaneously charge two devices at full power. The CH93MAX is a lightweight, multifunctional replacement for older mechanical clocks.



## 75 WATTS

### MAX USB Power

- + 75 watts of USB power
- + USB-A and USB-C (PD) connectors
- + 12- and 24-hour mode clock
- + Seconds ON or OFF
- + Internal, replaceable battery maintains time and Flight Timer memory
- + Fits standard panel cutout
- + FAA / EASA TSO certified
- + 2-year Limited Warranty

# 8

## MODES

Local Time, UTC / Zulu Time, Flight Timer, Countdown Timer,  
Stopwatch, Volts, OAT, Secondary Air Temp



Up to **30 WATTS** of **USB Power**

## CHRONOS

### CH93HP Series Digital Clocks / USB Chargers

The easy-to-install **CHRONOS CH93HP** delivers accurate time keeping and USB charging power to the cockpit. Available in single and dual USB-A configurations, the CH93HP delivers up to 30 watts of USB power. Its compact, 2-inch size fits in a standard panel cutout with an easy-to-navigate user interface.

- + Up to 30 watts of USB power
- + USB-A connectors
- + 12- and 24-hour mode clock
- + Seconds ON or OFF
- + Internal, replaceable battery maintains time and Flight Timer memory
- + FAA / EASA TSO certified
- + 2-year Limited Warranty

8

**MODES**

Local Time, UTC / Zulu Time, Flight Timer, Countdown Timer, Stopwatch, Volts, OAT, Secondary Air Temp





**High Power  
USB Chargers**



TA202 Series

**MAX Power  
USB Chargers**



TA360 Series

**USB  
Connector**

USB-A and USB-C  
Single and dual configurations

USB-A and USB-C (PD)  
Single and dual configurations

**USB  
Output**

15 watts / 3 amps    Single  
30 watts / 6 amps    Dual

60 watts / 3 amps    Single  
120 watts / 6 amps    Dual  
75 watts / 6 amps    Dual USB-A / USB-C (PD)

**Application**

In-seat, cabin, cockpit and galley

In-seat, cabin, cockpit and galley

**Protection**

No radio interference  
Short circuit, power surges,  
overload and over temperature

No radio interference  
Short circuit, power surges,  
overload and over temperature

**Dimensions**

1.5" W x 0.52" H x 1.25" D    Single  
1.5" W x 1.03" H x 1.25" D    Dual

1.5" W x 0.52" H x 2.0" D    Single  
1.5" W x 1.03" H x 2.0" D    Dual

**Mounting**

Front or rear  
Optional faceplates

Front or rear  
Optional faceplates

**Certification**

FAA TSO C71  
EASA ETSO C71  
CAAC CTSO C71  
RTCA DO-160G

FAA TSO C71  
EASA ETSO C71  
RTCA DO-160G

**Warranty**

Limited Lifetime Warranty

Limited Lifetime Warranty

**High Power**  
**Digital Clocks / USB Chargers**

**CHRONOS CH93HP Series**



**MAX Power**  
**Digital Clocks / USB Chargers**

**CHRONOS CH93MAX**



**USB  
Connector**

USB-A  
Single and dual configurations

USB-A and USB-C (PD)  
Dual configuration

**USB  
Output**

15 watts / 3 amps    Single  
30 watts / 6 amps    Dual

75 watts / 6 amps

**Input  
Voltage**

10–32 VDC; 21 watts maximum    Single  
10–32 VDC; 36 watts maximum    Dual

22–32 VDC; 84 watts maximum

**Modes**

Local Time, UTC / Zulu Time, Flight Timer,  
Countdown Timer, Stopwatch  
Volts, OAT, Secondary Air Temp (optional)

Local Time, UTC / Zulu Time, Flight Timer,  
Countdown Timer, Stopwatch, Volts, OAT,  
Secondary Air Temp

**Protection**

No radio interference  
Short circuit, power surges  
and over-current potential

No radio interference  
Short circuit, power surges  
and over-current potential

**Dimensions**

2.39" W x 2.39" H x 1.15" D (-2)  
2.39" W x 2.39" H x 1.22" D (-3, -4)

2.39" W x 2.39" H x 1.22" D

**Mounting**

Rear

Rear

**Certification**

FAA TSO C71  
EASA ETSO C71  
RTCA DO-160G

FAA TSO C71  
EASA ETSO C71  
RTCA DO-160G

**Warranty**

2-year Limited Warranty

2-year Limited Warranty



# USB Charging Port FACEPLATES



## SINGLE & DUAL OPTIONS AVAILABLE

Customize color and finish to complement your aircraft's interior

**TRUE BLUE POWER®**   
A division of Mid-Continent Instrument Co., Inc.

[truebluepowerusa.com](http://truebluepowerusa.com)

### Kansas

9400 East 34th Street North  
Wichita, Kansas 67226  
Tel. 316.630.0101  
Tel. 800.821.1212  
Fax 316.630.0723  
[tbp@mcico.com](mailto:tbp@mcico.com)

### California

16320 Stagg Street  
Van Nuys, California 91406  
Tel. 818.786.0300  
Tel. 800.345.7599  
Fax 818.786.2734  
[tbp@mcico.com](mailto:tbp@mcico.com)