

2025 PRODUCT CATALOG



WE FLY
WITH YOU[®]



Instruments and Avionics

Electrical Power Systems

Lithium-ion Batteries

General Aviation

Business Aviation

Commercial Aviation

Defense and Special Missions

Advanced Air Mobility

500+ STC
Aircraft Models

Save space. Save time. Save the day.



SAM[®] 2-inch Standby Attitude Module

Attitude, altitude, airspeed, slip, vertical trend & heading

ON THE
COVER



Beechcraft King Air C90

STC Approved: MD302 SAM[®] Standby Attitude Module, MD23 Digital Airspeed Indicator, MD23 Digital Counter Drum Encoding Altimeter, MD23 Digital Attitude Indicator, MD23 Digital GPS Clock, True Blue Power[®] TS835 Series Emergency Battery Power Supply

Welcome!

We're proud that **Mid-Continent Instruments and Avionics** and **True Blue Power** are your source for quality instruments, avionics, electrical power systems and lithium-ion batteries. Backed by over 60 years of experience, our team of expert technicians, engineers and customer service representatives are ready and available to support you.

As our partner, you benefit from safe and certified products, manufactured through innovative technologies and sophisticated clean-sheet designs. You have access to 24/7 AOG support and an extensive inventory of new, cutting-edge products that are stocked and ready to ship, when you need them most. Even better, our Quality Management System at our Wichita manufacturing facility is AS9100D and ISO9001:2015 certified. That means the products you rely on meet the strictest quality standards.

Our products are sold to qualified aviation businesses that serve general, business and commercial aviation, defense and special mission, UAV, all-electric, hybrid-electric and eVTOL aircraft.

Are you a pilot or aircraft owner? You can purchase our products from Authorized Dealers, worldwide. Visit our Dealer Locator at **mcico.com/dealer-locator** or use the QR code below to find products near you.



Dealer Locator



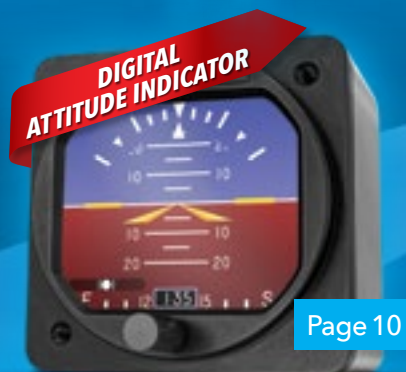
Quality Management System
AS9100D and ISO9001:2015 Certified
Wichita, Kansas manufacturing facility

Table of Contents

Airspeed Indicators _____	4
Altimeters _____	6
Annunciation Control Units (ACU) _____	9
Attitude Indicators _____	10
Autopilots _____	15
NEW Batteries _____	19
Battery Chargers _____	21
NEW Battery STC Kits _____	22
Carburetor Temperature Indicators and Probes _____	23
Clocks _____	25
Converters _____	26
Course Deviation Indicators (CDI) _____	27
Directional Gyros (DG) _____	29
NEW Emergency Battery Power Supplies _____	31
Emergency Locator Transmitters (ELT) _____	33
Flex® Custom Function Displays _____	35
NEW Frequency Converters _____	37
Ground Power Units (GPU) _____	37
Inverters _____	39
Light Trays _____	40
Magnetometers _____	40
Manifold Pressure Gauges _____	42
NEW NAV / COM Radios _____	42
Outlets _____	43
Radars _____	43
Remote Relay Units _____	43
SAM® Standby Attitude Modules _____	45
Turn and Slip Indicators _____	46
Turn Coordinators _____	46
NEW USB Chargers _____	48
NEW USB Charger Accessories _____	50
Vertical Speed Indicators (VSI) _____	51
NEW Wireless Chargers _____	52

2-INCH DIGITAL INSTRUMENTS

Smooth, high-resolution graphics



Airspeed Indicators



MD23-225

Airspeed Indicators, 2-inch, Digital

Mid-Continent Instruments and Avionics

This 2-inch digital Airspeed Indicator features smooth, high-resolution graphics with numeric readout, user-configurable range markings, and Mach/MMO indication. Ground Speed and True Air Speed can be displayed with external ARINC input. Night Vision Imaging System (NVIS) compatible versions are available.

PART NO.	CONFIGURATION	LIST PRICE
MD23-225	160, 200, 300, 400 or 500 knots/MPH (configurable), LCD	\$4,000

Rechargeable and field-replaceable
Emergency Battery Power Supply (Page 31)



TS6



8000 Airspeed

Shown with range markings

Airspeed Indicators, 3-inch, Analog

United Instruments

These popular 3-inch airspeed indicators are ideal for new installations or as a retrofit for older, outdated indicators. Specific range markings and dial configurations can be added to correspond with each individual aircraft.

The 8100 Series provides true airspeed indication by turning the knob and setting the outside air temperature in the TAS window.

MODEL NO.	CONFIGURATION	LIST PRICE
8000 Series	150, 200, 250, 300 or 400 MPH	\$1,475
8000 Series*	150, 200, 250, 300 or 400 MPH, Lighted	\$1,902
8100 Series	180, 200, 250, 300 or 400 MPH	\$1,595
8100 Series*	180, 200, 250, 300 or 400 MPH, Lighted	\$2,015

Range markings \$300 additional. Allow lead time for dials.

Aircraft pilot operating handbook and registration required.

* Specify lighting voltage and type (LED or incandescent) when ordering



8100 True Airspeed



Pilatus PC-12

Standard Equipment

True Blue Power® TA202 Series USB Chargers

STC Approved

MD23 Digital Lithium-ion Battery ACU
SAM® MD302 Standby Attitude Module
True Blue Power® TS835 Series Emergency Battery Power Supply
True Blue Power® TB40 Lithium-ion Aircraft Battery

Accessory

True Blue Power® TT28-12 Battery Tester/Charger PRO



Altimeters



MD23-215

Altimeters, 2-inch, Counter Drum, Encoding, Digital

Mid-Continent Instruments and Avionics

This 2-inch Counter Drum Encoding Altimeter is an ideal replacement for aging indicators. With smooth, high-resolution graphics and operating range of up to 55,000 feet, it offers user-selectable vertical speed indication and — for the first time — user-selectable 6-second vertical trend. SSEC customization and Night Vision Imaging System (NVIS) compatible versions are available.

PART NO.	CONFIGURATION	LIST PRICE
MD23-215	55K, Inches or millibars, LCD	\$4,000

Rechargeable and field-replaceable
Emergency Battery Power Supply (Page 31)



TS6



5934P-3A.83

Altimeters, 3-inch, 3-pointer, Analog

United Instruments

Designed to help the pilot determine altitude by measuring existing atmospheric pressure, these altimeters translate the measurement into “height above sea level”. This is indicated on the dial of the instrument in feet, which requires setting the barometric pressure in the Kollsman window.

PART NO.	CONFIGURATION	LIST PRICE
5934P-3A.83	20K, Inches	\$2,325
5934P-3A.194*	20K, Inches, Lighted	\$2,805
5934PD-3A.130	20K, Dual scale	\$2,377
5934PD-3A.250*	20K, Dual scale, Lighted	\$2,857
5934PM-3A.84	20K, Millibars	\$2,325
5934PM-3A.199*	20K, Millibars, Lighted	\$2,805
5934PA-3A.86	35K, Inches	\$2,617
5934PA-3A.122*	35K, Inches, Lighted	\$3,097
5934PAD-3A.132	35K, Dual scale	\$2,665
5934PAD-3A.259*	35K, Dual scale, Lighted	\$3,145
5934PAM-3A.87	35K, Millibars	\$2,617
5934PAM-3A.185*	35K, Millibars, Lighted	\$3,097
5934-3A.154*	20K, Inches, Lighted, Helicopter application	\$2,805

* Specify lighting voltage and type (LED or incandescent) when ordering



5934PAM-3A.87



Daher Kodiak 100

Standard Equipment

True Blue Power® TA202 Series USB Chargers

STC Approved

SAM® MD302 Standby Attitude Module
MD32 Remote Magnetometer





Bell 505 Jet Ranger X

Standard Equipment

SAM® MD302 Standby Attitude Module
True Blue Power® TB17 Lithium-ion Aircraft Battery

STC Approved

True Blue Power® TA202 Series USB Chargers

Accessory

True Blue Power® TT28-12 Battery Tester/Charger PRO



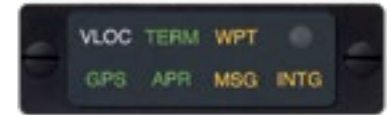
Annunciation Control Units

ACUs for Avidyne

Mid-Continent Instruments and Avionics

IFD 440/540

PART NO.	CONFIGURATION	LIST PRICE
MD41-1484W	Horizontal, 14V, LED lighting, No buttons	\$900
MD41-1488W	Horizontal, 28V, LED lighting, No buttons	\$900



MD41-1484W

ACUs for Garmin GPS / NAV / COMM / MFD

Mid-Continent Instruments and Avionics

GPS 400/500, GNC 420/520, GTN 625/725

PART NO.	CONFIGURATION	LIST PRICE
MD41-1408A	Horizontal, 28V (head only)	\$1,489
MD41-1408A	Horizontal, 28V (with remote relay)	\$3,174



MD41-1408A

GNC 420W, GNS 430W/530W

PART NO.	CONFIGURATION	LIST PRICE
MD41-1484W	Horizontal, 14V, LED lighting, No buttons	\$900
MD41-1468A	Horizontal, 28V	\$1,459
MD41-1488W	Horizontal, 28V, LED lighting, No buttons	\$900



MD41-1468A

GTN 650/750 SERIES

PART NO.	CONFIGURATION	LIST PRICE
MD41-1510	Horizontal, 28V, LED lighting	\$1,115
MD41-1514	Horizontal, 28V, 5V lighting, LED lighting	\$1,115



MD41-1510

Remote Relay Units for ACUs (Page 43)



MD41-248

Annunciation Control Units, Attitude Indicators



MD41-1817

Lithium-ion Battery ACUs

Mid-Continent Instruments and Avionics

These ACUs interface with True Blue Power’s lithium-ion aircraft batteries, delivering accurate status information to the cockpit. They are designed to be clearly visible in daylight and feature external dimming adjustments for balancing low-level light conditions.

PART NO.	CONFIGURATION	LIST PRICE
MD41-1817	1-button, Horizontal, 28V (TB17)	\$1,318
MD41-1844	1-button, Horizontal, 28V (TB44)	\$1,318



MD23-104

Lithium-ion Battery ACUs, 2-inch, Digital

Mid-Continent Instruments and Avionics

This digital Annunciation Control Unit (ACU) monitors and displays True Blue Power® Gen5 lithium-ion battery parameters. It features smooth, high-resolution graphics and provides status, state of charge, state of health, volts, amps, temperature, remaining life and fault data. Night Vision Imaging System (NVIS) compatible versions are available.

PART NO.	CONFIGURATION	LIST PRICE
MD23-104	True Blue Power Gen5 batteries (configurable), LCD	\$2,500

Rechargeable and field-replaceable
Emergency Battery Power Supply (Page 31)



TS6



MD23-342

Attitude Indicators, 2-inch, Digital

Mid-Continent Instruments and Avionics

This digital Attitude Indicator is a solid-state instrument that displays attitude, slip, turn rate and heading information during normal or standby operation. The certified, MD23-342 provides independent attitude without the need for GPS, magnetometer or airspeed. Night Vision Imaging System (NVIS) compatible versions are available.

PART NO.	CONFIGURATION	LIST PRICE
MD23-342	2-inch, Attitude, Slip, Turn rate, Heading, LCD	\$5,000



MD32

Remote Magnetometer (Page 40)

Rechargeable and field-replaceable
Emergency Battery Power Supply (Page 31)



TS6



Beechcraft King Air 350

Standard Equipment	True Blue Power® TA202 Series USB Chargers	
STC Approved	MD23 Flex® Custom Function Display	
	MD23 Digital Counter Drum Encoding Altimeter	
	MD23 Digital Airspeed Indicator	
	MD23 Digital Attitude Indicator	
Accessory	CHRONOS® CH93MAX Clock / USB Charger	
	True Blue Power® TS835 Series Emergency Battery Power Supply	
	True Blue Power® Lithium-ion TB44 Aircraft Battery	
Accessory	True Blue Power® TT28-12 Battery Tester/Charger PRO	



UPGRADE YOUR H125 & H130

WITH RELIABLE, LASTING POWER

Start lighter, start faster, and start smarter with the Vertical Flight Solutions Lithium-Ion Battery Kit for H125 and H130 helicopters. The Lithium-Ion Battery Kit offers on-condition maintenance, up to 60% less weight, and more amps per pound than any other battery.

Designed for durability and efficiency, our battery kit delivers faster engine starts, reduced fuel consumption, and increased payload capacity. With multiple STC approvals, it's the trusted upgrade for enhanced performance and reliability.

VERTICALFLIGHTSOLUTIONS.COM



TB20

H125 & H130
STC APPROVED



TB30

H125
STC APPROVED



MD23-104

MULTI-FUNCTION
DIGITAL ACU

Lifesaver® Attitude Indicators, 3-inch, Electric Mid-Continent Instruments and Avionics

The Lifesaver® is the only electric attitude indicator with a self-contained, nickel-metal hydride battery backup that provides one hour of emergency attitude reference in the event of power failure. With 7,500 hours MTBF—more than double that of the competition—it is an exceptional value. Added safety, ease of installation and cost benefit make this an ideal primary or standby artificial horizon.

Versions available to match existing instrument/EFIS displays. Anti-reflective glass and long-life lighting are standard on all Mid-Continent Instruments and Avionics attitude indicators.

LIFESAVER® — with BATTERY BACKUP

PART NO.	CONFIGURATION	LIST PRICE
Lifesaver 4300-411*	10–32V, Lighted, 0–8°	\$7,222
6430043-1	Battery charger/tester	\$1,798
36027-1	Front mount adapter, 1/2-inch thick	\$660
36028-1	Front mount adapter, 3/32-inch thick	\$142
36022	Knob cover	\$90
MS3116F8-4S**	Mating connector	\$55
PW-XX	Panel wedges	\$211
9015671	Remote mount kit for battery pack	\$125
9015607	Replacement battery pack, NiMH	\$367
36023	Slip indicator, Inclinator	\$445

* Specify panel tilt, lighting voltage and type (LED or incandescent) when ordering

** Included with purchase of Lifesaver® attitude indicators



Lifesaver® 4300-411



4300-206



4300-311

Attitude Indicators, 3-inch, Electric Mid-Continent Instruments and Avionics

Engineered as a primary or standby artificial horizon in fixed-wing aircraft and helicopters, the single connection on these units makes installation a snap. These indicators are standard equipment on many OEM aircraft, including the Beechcraft Baron and Bonanza.

Featuring 10–32 volt DC operation, anti-reflective glass, long-life lighting and 7,500 hours MTBF, these attitude indicators are a cost-effective and safe alternative to unreliable vacuum systems.

PART NO.	CONFIGURATION	LIST PRICE
4300-206	10–32V, 6.5°, Diamond, Inclinator	\$6,580
4300-311*	10–32V, 0–8°, Lighted	\$6,530

* Specify panel tilt, lighting voltage and type (LED or incandescent) when ordering

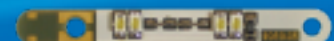
Light Trays for Lifesaver® Attitude Indicators (Page 40)



9015640-2



9015640-10



9016909-14



Van's Aircraft RV-6

Optional Equipment

Honeywell xCruze 100 Autopilot
True Blue Power® TA360 Series USB Chargers
True Blue Power® TB28-12V Lithium-ion Aircraft Battery

Accessory

True Blue Power® TT28-12 Battery Tester/Charger PRO



Autopilots, Certified

Honeywell

The **AeroCruze 100** is an affordable and flexible digital autopilot system for Cessna 172, 175, 177, 180, 182, 185; Piper PA-28, PA-32; and select Mooney M20 series aircraft.



AC100XX

MODEL NO.	PART NO.	CONFIGURATION	LIST PRICE
AeroCruze 100*	AC100XX	Autopilot system, 2-inch round controller, includes servos and installation kit	\$5,995
AeroCruze 100*	AC100XX	Autopilot system, 3-inch round controller, includes servos and installation kit	\$5,995
AeroCruze 100*	AC100XX	Autopilot system, Flat pack controller, includes servos and installation kit	\$5,995

* Specify aircraft type, aircraft model and voltage when ordering

Autopilots, Experimental

Honeywell

The **xCruze 100** digital autopilot system is designed for the experimental aircraft cockpit and interfaces with popular experimental EFIS solutions.



XC100-XXX

MODEL NO.	PART NO.	CONFIGURATION	LIST PRICE
xCruze 100*	XC100-XXX	Autopilot control head, 2-inch, Round, with installation kit	Please call
xCruze 100*	XC100-XXX	Autopilot control head, 3-inch, Round, with installation kit	Please call
xCruze 100*	XC100-XXX	Autopilot control head, Flat pack, with installation kit	Please call
BS-B	8100-070	Servo	Please call
BS-C	8100-071	Servo	Please call
PS-B	8100-072	Servo	Please call
PS-C	8100-073	Servo	Please call
Servo Hardware	8700-110	Standard arm assembly kit	Please call
Servo Hardware	8700-111	Standard capstan assembly kit	Please call

* Specify aircraft type when ordering



Cessna Citation Longitude

Standard Equipment

True Blue Power® TC351 Converter
True Blue Power® TI1502 Inverter
True Blue Power® TB44 Lithium-ion Aircraft Battery

Accessory

True Blue Power® TT28-12 Battery Tester/Charger PRO





Aircraft Spruce
Avionics and Supplies Superstore



Orders by 4pm Ship Same Day by UPS



Free Shipping on Qualified Orders



Industry Leader Since 1965



Lowest Price Policy



Lithium-ion
Batteries



CHRONOS®
Digital Clocks/USB Chargers



USB
Chargers



Turn
Coordinators

www.aircraftspruce.com

1-877-4-SPRUCE

Certified 50 amp-hour Lithium-ion Aircraft Battery

NEW TB50

SAME-SIZE REPLACEMENT

FOR STANDARD 44 AMP-HOUR BATTERIES

START **LIGHTER**
START **FASTER**
START **SMARTER**



Batteries, Lithium-ion True Blue Power®

Start LIGHTER, start FASTER and start SMARTER every time. True Blue Power® batteries save up to 85 pounds per battery cutting aircraft battery weight by more than 60% and increasing your useful load. Less weight means you'll have more passengers, more cargo, more fuel and more design flexibility. Even better, you'll protect your engine and extend component life with faster and cooler engine starts and have access to real-time state-of-charge data, on demand.

**LITHIUM-ION
BATTERY
STC Kits**

(Page 22)

MODEL NO.	PART NO.	CONFIGURATION	LIST PRICE
TB14	6430014-2	13 amp hour, Aluminum case	Please call
TB14	6430014-21	13 amp hour, Stainless steel case	Please call
TB17	6430017-1	17 amp hour, Aluminum case	Please call
TB17	6430017-2	17 amp hour, Heater on/off feature, Aluminum case	Please call
TB17	6430017-3	17 amp hour, Quick disconnect, Aluminum case	Please call
TB17	6430017-4	17 amp hour, Heater on/off feature, Quick disconnect, Aluminum case	Please call
TB28-12V	6430014-1	26 amp hour, 12 volt, Aluminum case	Please call
TB28-12V	6430014-11	26 amp hour, 12 volt, Stainless steel case	Please call
Gen5 TB20	6430020-1	20 amp hour, Aluminum case	Please call
Gen5 TB30	6430030-1	30 amp hour, Aluminum case	Please call
Gen5 TB30	6430030-2	30 amp hour, Series discharge, Aluminum case	Please call
Gen5 TB40	6430040-1	40 amp hour, Aluminum case	Please call
Gen5 TB40	6430040-2	40 amp hour, Series discharge, Aluminum case	Please call
TB44	6430044-2	46 amp hour, Aluminum case	Please call
TB44	6430044-4	46 amp hour, Aluminum case, No handles	Please call
Gen5 TB50	6430050-1	50 amp hour, Aluminum case	Please call
Gen5 TB60	6431060-1	60 amp hour, Aluminum case	Please call
	9019697-1	Connector kit (TB14, TB28-12V)	\$235
	9018048	Connector kit (TB17)	\$235
	9018259	Connector kit, 90° (TB17)	\$235
	9018042	Connector kit (TB44)	\$513
	9018042-1	Connector kit (Gen5 TB20, Gen5 TB30, Gen5 TB40, Gen5 TB50, Gen5 TB60)	\$513
	9018044	Service cable (TB44)	\$235
	9019698-1	Vent kit (TB14, TB28-12V)	\$274
	9018049	Vent kit (TB17)	\$274
	9019322-1	Vent kit (Gen5 TB20, Gen5 TB30)	\$382
	9018043	Vent kit (Gen5 TB40, TB44, Gen5 TB50, Gen5 TB60)	\$509



TB14



TB17



Gen5 TB20



Gen5 TB40



Gen5 TB50

ACUs for True Blue Power Lithium-ion Batteries (Page 10)



MD23-104



Airbus H130

STC Approved

CHRONOS® CH93MAX Clock / USB Charger
MD23 Digital Lithium-ion Battery ACU
True Blue Power® TA202 Series USB Chargers
True Blue Power® TB17 Lithium-ion Aircraft Battery

Accessory

True Blue Power® TT28-12 Battery Tester/Charger PRO



Lithium-ion Aircraft Battery TRAINING

Learn from the
experts with **FREE,**
ON-DEMAND
courses.



SCAN TO GET STARTED

– Each course is less than 10 minutes –



Qualifies for one credit hour toward FAA AMT and IA Refresher training

Battery Chargers

True Blue Power®

The True Blue Charger Mx Series provides simple, safe and automatic charging for lithium-ion and sealed lead-acid aircraft batteries. The 2.5-amp chargers maintain batteries of any capacity, from zero to full state-of-charge, while continuously displaying battery voltage.

The True Blue Charger PRO TT28-12 is specifically engineered to charge, discharge and test lithium-ion and lead-acid aircraft batteries. It is capable of a 12.5 amp charge and up to 60 amp discharge. It is pre-loaded with all charge and discharge parameters for True Blue Power lithium-ion batteries, allowing maintenance personnel to safely and efficiently top charge batteries and perform scheduled capacity checks.

Mx TT28-2
(282-101)



Mx TT28-2
(282-102)



MODEL NO.	PART NO.	CONFIGURATION	LIST PRICE
Mx TT28-2	282-101	2.5 amp, Charge, Maintain, Lithium-ion and Lead-acid compatible, MS-3509 direct connect	\$1,299
Mx TT28-2	282-102	2.5 amp, Charge, Maintain, Lithium-ion and Lead-acid compatible, Cable connect	\$1,299
PRO TT28-12	ACM-1260-101	12.5 amp, Charge, Maintain, Test, Lithium-ion and Lead-acid compatible	\$3,999
	9012-1081	Battery charging adapter (TS835 Series)	\$649
TT43	6430043-1	Battery charger/tester (TS420 Series)	\$1,798



PRO TT28-12
(ACM-1260-101)

NEW

LITHIUM-ION BATTERY

**STC
KITS**

Battery STC Kits True Blue Power®

PART NO.	AIRCRAFT	CONFIGURATION	LIST PRICE
—	Airbus Helicopters AS355	STC kit includes (1) TB17 battery	Please call
—	Airbus Helicopters AS355	STC kit includes (1) Gen5 TB20 battery	Please call
—	Airbus Helicopters EC120	STC kit includes (1) TB17 battery	Please call
—	Airbus Helicopters EC130/H130	STC kit includes (1) TB17 battery	Please call
—	Airbus Helicopters AS350/H125 Series	STC kit includes (1) TB17 battery	Please call
—	Airbus Helicopters AS350/H125 Series	STC kit includes (1) Gen5 TB20 battery	Please call
—	Airbus Helicopters AS350/H125 Series	STC kit includes (1) Gen5 TB30 battery	Please call
7430001-1	Beechcraft Bonanza A36 (28 VDC Electrical Bus Only)	STC kit includes (1) TB17 battery	\$9,299
—	Beechcraft King Air 350 Series	STC kit includes (1) TB44 battery	Please call
—	Bell 206, 206A, 206B, 206L, 206L1, 206L3, 206L4	STC kit includes (1) TB17 battery	Please call
7430003-1	Cessna Caravan 208/208B (Not compatible with Garmin G1000 avionics)	STC kit includes (1) TB44 battery	\$19,776
CE295-401-01	De Havilland DHC-6 100/200/300 Series	STC kit includes (1) TB44 battery	Please call
CE273-401-01	De Havilland DHC-8 100/200/300 Series	STC kit includes (2) Gen5 TB40 batteries	Please call
—	Enstrom 480B	STC kit includes (1) TB17 battery	Please call
7430005-1	Hawker / Beechjet 400	STC kit includes (1) Gen5 TB40 battery	\$24,900
—	Hiller UH-12E	STC kit includes (1) TB17 battery	Please call
—	MD Helicopters MD 369/500	STC kit includes (1) TB17 battery	Please call
—	Pilatus PC-12, /45, /47, /47E, /NG, /NGX (Single Battery)	STC kit includes (1) Gen5 TB40 battery	Please call
—	Pilatus PC-12, /45, /47, /47E, /NG, /NGX (Dual Battery)	STC kit includes (2) Gen5 TB40 batteries	Please call
7430002-1	Robinson R44	STC kit includes (1) TB17 battery	\$10,265

Carburetor Temperature Indicators and Probes

Carburetor Temperature Indicators

Mid-Continent Instruments and Avionics

PART NO.	CONFIGURATION	LIST PRICE
MD11-3	14V PMA indicator	\$915
MD11-4	28V PMA indicator	\$915



MD11-4

Carburetor Temperature Probes

Mid-Continent Instruments and Avionics

The B-5 Carb Temp Probe works with MD11 Series Carb Temp Indicators and is approved for many engines. Contact techsupport@mcico.com for STC and PMA information.

PART NO.	CONFIGURATION	LIST PRICE
B-5	PMA/STC Probe only	\$552



B-5

© Lockheed Martin - All rights reserved, used by permission.



Lockheed Martin X-59

Standard Equipment

True Blue Power® TI2004 Inverter
True Blue Power® TB44 Lithium-ion Aircraft Battery

Accessory

True Blue Power® PRO TT28-12 Battery Tester/Charger



DIGITAL CLOCKS USB CHARGERS

CHRONOS[®]

The only digital clocks with
MAX USB POWER

UP TO **60 WATTS** PER PORT

8 MODES

Local Time, UTC/Zulu Time,
Flight Timer, Countdown Timer,
Stopwatch, Volts, OAT,
Secondary Air Temp



6420093-0



6420093-3



6420093-2



6420093-4



6420093-5

CHRONOS® Clocks / USB Chargers, 2-inch, Digital

Mid-Continent Instruments and Avionics

MODEL NO.	PART NO.	CONFIGURATION	LIST PRICE
CHRONOS CH93	6420093-0	10-32 VDC in 8 MODES Local time, UTC/Zulu time, Flight timer, Countdown timer, Stopwatch, Volts, OAT, Secondary air temp	\$699
CHRONOS CH93HP	6420093-3	10-32 VDC in, 15W / 3A out per port, Single USB-A 8 MODES Local time, UTC/Zulu time, Flight timer, Countdown timer, Stopwatch, Volts, OAT, Secondary air temp	\$789
CHRONOS CH93HP	6420093-2	10-32 VDC in, 15W / 3A out per port, Dual USB-A 5 MODES Local time, UTC/Zulu time, Flight timer, Countdown timer, Stopwatch	\$729
CHRONOS CH93HP	6420093-4	10-32 VDC in, 15W / 3A out per port, Dual USB-A 8 MODES Local time, UTC/Zulu time, Flight timer, Countdown timer, Stopwatch, Volts, OAT, Secondary air temp	\$919
CHRONOS CH93MAX	6420093-5	22-32 VDC in, 15W / 3A and 60W / 3A out per port, Dual USB-A / USB-C (PD) 8 MODES Local time, UTC/Zulu time, Flight timer, Countdown timer, Stopwatch, Volts, OAT, Secondary air temp	\$969
	9018178*	Installation kit (6420093-2)	\$40
	9018178-1*	Installation kit (6420093-0, 6420093-3, 6420093-4, 6420093-5)	\$92
	B-10-1	Outside air temperature probe, 500 Ω (6420093-0, 6420093-3, 6420093-4, 6420093-5)	\$523
	B-11-1	Secondary air temperature probe, 500 Ω (6420093-0, 6420093-3, 6420093-4, 6420093-5)	\$368
	B-11-2	Current sense secondary air temperature probe (6420093-0, 6420093-3, 6420093-4, 6420093-5)	\$368

* Included with purchase of associated CHRONOS® product

GPS Clocks, 2-inch, Digital

Mid-Continent Instruments and Avionics

The digital multi-function clock features UTC Time, Local Time and multiple timers. It receives an ARINC 429 input to sync with a GPS source and can also deliver the estimated time to your next waypoint. This digital clock features smooth, high-resolution graphics and can output time to other external equipment. Night Vision Imaging System (NVIS) compatible versions are available.

Rechargeable and field-replaceable
Emergency Battery Power Supply (Page 31)



TS6



MD23-190

PART NO.	CONFIGURATION	LIST PRICE
MD23-190	ARINC 429 input sync with GPS source, LCD, 9 FUNCTIONS Local time, UTC/Zulu time, Flight timer, Countdown timer, Stopwatch, Date, Time to waypoint, Hobbs, Run timer	\$3,000

Converters



TC230

Converters, DC-to-DC True Blue Power®

The **TC120** and **TC240 Series** are multi-purpose, step-down voltage converters with variable output. Supplying 5 to 24 volts of power, the TC120 and TC240 are ideal for low-voltage DC electronics, including in-seat, cabin and cockpit power applications.

The **TC230 Series** converters are the smallest and lightest step-up voltage converters available today. Utilizing the aircraft's 14-volt system, the TC230 powers 28-volt avionics, instruments and accessories, including radios, GPS and electronic equipment.

MODEL NO.	PART NO.	CONFIGURATION	LIST PRICE
TC120	6430120-1	120 watts, 24–32 VDC input, 5–24 VDC output	\$740
TC120	6430120-2	120 watts, 24–32 VDC input, 5–24 VDC output, Remote on/off	\$740
TC120	6430120-3	120 watts, 22–32 VDC input, 5–24 VDC output, Military environmental and EMI qualifications	\$1,348
TC230	6430234-1	230 watts, 10–18 VDC input, 28 VDC output	\$1,243
TC230	6430234-2	230 watts, 10–18 VDC input, 28 VDC output, Remote on/off	\$1,243
TC240	6430240-1	240 watts, 24–32 VDC input, 5–24 VDC output	\$1,234
TC240	6430240-2	240 watts, 24–32 VDC input, 5–24 VDC output, Remote on/off	\$1,234
TC351*	6430351-1	350 watts, 24–32 VDC input, 115 VDC output, Remote on/off	Please call

* Custom configuration not FAA TSO certified



TC2000

Converters, AC-to-DC True Blue Power®

The **TC280** converter produces enough energy to power electronic equipment throughout the aircraft. The 280-watt voltage converter features a highly-efficient fanless design, saves energy and reduces weight. It can be conveniently mounted in the floor, cabin wall or outside the pressure vessel.

The **TC2000** is the largest True Blue Power® converter. It is ideal for aircraft with AC electrical systems that require 28-volt DC power. The TC2000 delivers 2,000 watts of power to in-flight entertainment systems, interior and exterior lighting and USB chargers. Just one TC2000 can power more than 100 single True Blue Power TA202 Series USB charging ports.

MODEL NO.	PART NO.	CONFIGURATION	LIST PRICE
TC280	6430280-1	280 watts, 115 VAC / 350–800 Hz input, 28 VDC output (10A)	\$3,650
TC2000	6432001-1	2,000 watts, 100–250 VAC / 47–800 Hz input, 28 VDC output (21A)	\$15,634

USB Chargers for True Blue Power Converters

Single and dual port Lighted and non-lighted USB-A, USB-C and USB-C PD (Pages 48 & 49)



6430360-31

Course Deviation Indicators

CDIs for Avidyne, Honeywell, Collins, Garmin and Trig Avionics

Mid-Continent Instruments and Avionics

The MD200 Series sets the standard for navigation instruments that are significantly more reliable, longer lasting and easier to read. The MD200 Series is the preferred replacement for the Collins Micro Line IND 350 Series and replaces the BendixKing KI 206.

These CDIs feature new-generation rectilinear meter movements for more accurate readings, plus a course selector and resolver output. The MD200 Series can be configured for 14V or 28V installations.

GTN 600/700 SERIES, CNX80, GX50/60, GNS 400/500 SERIES, IFD 440/540

PART NO.	CONFIGURATION	LIST PRICE
MD200-606	3-inch, L/R, Glideslope with annunciators	\$3,356
MD200-706	3-inch, L/R, Glideslope with annunciators	\$3,356
MD222-406*	2-inch, L/R, Glideslope with annunciators, LED lighting, VLOC	\$3,911

* Available with course selector resolver output



MD200-706
(3-inch)



MD222-406
(2-inch)



Northrop Grumman MQ-4C Triton

Standard Equipment

True Blue Power® TC120 DC-to-DC Voltage Converter
True Blue Power® TI254 DC-to-AC Inverter





Visit www.edmo.com or call our knowledgeable customer service at 800.235.3300 for all your avionics needs. Ask about FREE SHIPPING!



**CELEBRATING 35 YEARS AS
A PREMIER MID-CONTINENT
INSTRUMENTS AND AVIONICS
DISTRIBUTOR!**



EDMO DISTRIBUTORS, INC
WWW.EDMO.COM
800.235.3300



F-16 Fighting Falcon

MD23 Digital Attitude Indicator



Directional Gyros, Electric

Mid-Continent Instruments and Avionics

Advanced circuitry and improved design allow these directional gyros to withstand high vibration and require less than half the power of standard directional gyros. Lightweight (1.8 lbs.) and reliable, these units utilize long-life LEDs for a crisp, legible backlit display, and with 10–32 volt DC input, they will work in any aircraft. Exceptional RTCA DO-160E HIRF immunity makes this an ideal replacement for heavy, older AIM and RC Allen units.



3300-10

PART NO.	CONFIGURATION	LIST PRICE
3300-10*	10–32 VDC	\$4,680
3300-11*	10–32 VDC, LED lighting	\$5,139

* Available for panel tilts up to 10° only

STC APPROVED

POWER EMERGENCY LIGHTING AND CRITICAL EQUIPMENT



TS28
EMERGENCY BATTERY
POWER SUPPLY



Cessna Citation
550 / 560 / 680 / 680A / 700

Direct replacement for
Radiant Battery Power Supply CBS28-1

Emergency Battery Power Supplies

Emergency Battery Power Supplies True Blue Power®

Provide reliable emergency power to critical flight equipment in the event of primary power loss.

The TS28 provides DC power to emergency lighting and other critical equipment in the event of main aircraft power failure. It is designed for Citation 550, 560, 680, 680A and 700 aircraft models. The Emergency Battery Power Supply delivers superior quality, longer lifespan, and cell-swapping capabilities, reducing cost for aircraft operators.



TS28

Direct replacement

for Radiant Battery Power Supply CBS28-1

The TS6 is compatible with Mid-Continent Instruments and Avionics 2-inch digital instruments, the Flex® Custom Function Display, and avionics or components that require 28 VDC input.



The TS60 Series lithium-ion emergency battery power supply provides constant 6.6 VDC power to emergency lighting systems in the event of electrical system failure.



MODEL NO.	PART NO.	CONFIGURATION	LIST PRICE
TS6	6430006-1	24 VDC, 0.25 A, 6 watt, DB9 connector, NiMH	\$399
TS28	6430028-1	24 VDC, 1 A, 6 watt, 4-pin circular connector, NiMH	\$4,500
TS60	6430060-1	6.6 VDC, 28 watt, Bayonet connector, Lithium-ion	\$3,900
TS60	6430060-2	6.6 VDC, 28 watt, Threaded connector, Lithium-ion	\$3,900
TS60	6430060-3	6.6 VDC, 43 watt, Bayonet connector, Lithium-ion	\$4,500
TS60	6430060-4	6.6 VDC, 43 watt, Threaded connector, Lithium-ion	\$4,500
TS835	MD835-1	24.5 VDC, 4.5 Ah, 20 amp fuse, Lithium-ion	\$5,712
TS835	MD835-3	24.5 VDC, 4.5 Ah, 15 amp fuse (Airbus Helicopters), Lithium-ion	\$5,712
TS835	MD835-5	24.5 VDC primary output, 5 VDC auxiliary output, 4.5 Ah, 20 amp fuse, Lithium-ion	\$6,981
	5120-107-C01	Mounting rack (TS835 Series)	\$828
	9016600-2	Connector (TS835 Series)	\$363
	9017176	Cockpit self-test switch (TS835 Series)	\$1,104
	9017983	Vent tube kit (optional) (TS835 Series)	\$379
	9019931	Replacement battery pack (TS28)	\$1,300

The TS835 Series emergency battery power supply delivers 24.5 VDC (5 VDC optional) power for critical and standby equipment. Offering significant advantages over older, lead-acid designs, the TS835 provides a 63% weight savings, reduced maintenance costs and improved life expectancy. It is STC approved on more than 100 aircraft models.



TS835

Direct replacement

for J.E.T. PS-835 and PS-855





Robinson R44 Raven II

Custom Design

MD210 Engine Cluster
MD209 Engine Cluster
MD206 Dual Tachometer

Standard Equipment

True Blue Power® TB17 Lithium-ion Aircraft Battery

STC Approved

True Blue Power® TB17 Lithium-ion Aircraft Battery

Accessory

True Blue Power® TA202 Series USB Chargers
True Blue Power® TT28-12 Battery Tester/Charger PRO



Emergency Locator Transmitters

Emergency Locator Transmitters

Kannad Aviation

Mid-Continent is an authorized dealer and service center for Kannad Aviation, offering repair, warranty repair and warranty replacement services for Kannad Aviation emergency locator transmitters (ELT).

Whether outfitting an aircraft with an ELT is mandated or preferred, installing an emergency beacon that will activate automatically in the event of an emergency is critical to ensuring the long-term safety of the crew.



S1851501-02

PART NO.	CONFIGURATION	LIST PRICE
S1821502-02	ELT, Kannad 406AF	\$10,665
S1851501-02	ELT, Integra AF	\$1,399
S1852501-02	ELT, Integra AF-H, Helicopter	\$1,545



SOUTHERN CROSS AVIATION

DISTRIBUTION SOLUTIONS FOR TODAY'S AVIATION WORLD

AN AUTHORIZED
DISTRIBUTOR
FOR MID-CONTINENT INSTRUMENTS
AND AVIONICS & TRUE BLUE POWER

CALL US AT 1 855-722-2470 • [SCROSS.COM/STORE](https://scross.com/store)

FORT LAUDERDALE - FL • ANCHORAGE - AK • PHOENIX - MESA - AZ

5250 NW 33RD AVE • FT. LAUDERDALE, FL 33309 • PHONE NUMBER: 954-377-0320
3501 POSTMARK DRIVE • ANCHORAGE, ALASKA 99502 • PHONE NUMBER: 907-416-7500
7250 S. SOSSAMAN RD. SUITE 125 • PHOENIX-MESA, AZ 85212



FLEX[®]

Streamline the product development process,
save hundreds of thousands of dollars
in NRE and certification costs, and
compress your project timeline.
Go from concept to cockpit in
30 days, without breaking
the bank.



Your custom display in half
the time, at half the cost.

EXPECT **FAST** EXPECT **EASY** EXPECT **AFFORDABLE**

Flex® Custom Function Displays

Flex® Custom Function Displays, 2-inch, Digital Mid-Continent Instruments and Avionics

A controller, data converter and custom display, all-in-one.

Bring new data to the cockpit or replace your aging instruments in **half the time, at half the cost**. The FAA TSO certified Flex® simplifies avionics systems integration through customizable data parameters, user interface and high-resolution graphics. Night Vision Imaging System (NVIS) compatible versions are available.

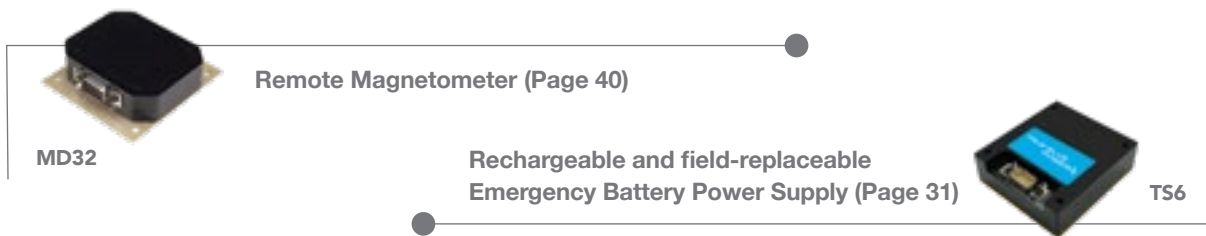
The Flex® 6430023-3 features an Attitude and Heading Reference System (AHRS) and delivers pitch and roll output via ARINC 429, without any additional equipment. Heading is available when paired with the MD32 Magnetometer.



Flex® MD23

MODEL NO.	PART NO.	CONFIGURATION	LIST PRICE
Flex MD23*	6420023-1	2-inch, Custom programmable, Multi I/O, Frequency inputs, LCD	Please call
Flex MD23*	6420023-2	2-inch, Custom programmable, Multi I/O, Pitot and static ports, LCD	Please call
Flex MD23*	6420023-3	2-inch, Custom programmable, Multi I/O, Solid-state MEMS gyro and accelerometer, LCD	Please call

* Does not include preloaded Custom Instrument Definition (CID)



Custom software design using 18 programmable inputs and customer-specified outputs starting at \$15,000



STC APPROVED

4000 WATT

AC-to-AC

FREQUENCY
CONVERTERS



Gulfstream

G450 / G550 / G650 / G650ER



TFC4000

DROP-IN REPLACEMENT

Frequency Converters, Ground Power Units



Frequency Converters True Blue Power®

Quiet your cabin and cut replacement costs with the TFC4000 Series AC-to-AC Frequency Converters. **Weighing only 19 pounds**, they are the lightest and quietest in their power class. You'll gain more useful load and access to up to 4,000 watts of wall outlet power. Available with an output voltage of 115 VAC at 60 Hz (TFC4000) or 230 VAC at 50 Hz (TFC4002), the frequency converters are easy to install in tight, hard-to-reach spaces.



TFC4000

The TFC4000 is a drop-in replacement for the **GE 717220-1, 717220-2, 717220-2R,** and **Avionic Instruments LLC converter 1-002-0102-2444, 1-002-0102-2052.**

MODEL NO.	PART NO.	CONFIGURATION	LIST PRICE
TFC4000	6434000-1	4 kVA, 115 VAC, 3-phase, 360-800 Hz input, 115 VAC, single phase, 60 Hz output	\$35,000
TFC4002	6434000-2	4 kVA, 115 VAC, 3-phase, 360-800 Hz input, 230 VAC, single phase, 50 Hz output	\$35,000

STARTSTICK

Ground Power Units (GPU)

Aviation Battery Systems

Compatible, lightweight, safe and convenient. StartStick® is the most advanced, portable ground power unit on the market. The stowable, cable-less design is engineered to be durable and long lasting. Its lithium-ion cell chemistry delivers high power in a safe, rugged and convenient package.



100155



100156

MODEL NO.	PART NO.	CONFIGURATION	LIST PRICE
StartStick 10	100154	Lithium-ion powered, 10 amp-hour capacity, portable	\$3,499
StartStick 15	100155	Lithium-ion powered, 15 amp-hour capacity, portable	\$4,499
StartStick 20	100156	Lithium-ion powered, 20 amp-hour capacity, portable	\$5,499
	100230	StartStick 10 Bag	\$199
	100231	StartStick 15 Bag	\$199
	100232	StartStick 20 Hard case	\$399
	100299	StartStick, Multi-purpose adapter	\$675
	100390	StartStick, Power adapter, 3.5 amp, 100 watt	\$189
	100300	StartStick, 24-inch Extension cable	\$675
	100298	StartStick, Load relief strap	\$99

Please call for wall chargers with international plugs

ELECTRICAL POWER SYSTEMS

CERTIFIED IN-SEAT, CABIN, COCKPIT & GALLEY POWER SYSTEMS



Wireless Chargers USB Chargers Inverters Voltage Converters

Frequency Converters Emergency Battery Power Supplies AC Outlets

Inverters, DC-to-AC

True Blue Power®

Inverters

The **TI10** inverter provides a reliable source of 26-volt, 400 Hz AC power. The voltage and frequency of its pure sine wave output remains stable regardless of input fluctuations.

The **TI250 Series** is a highly-efficient inverter that produces **250 watts** of power from the aircraft's 28 VDC input. Engineered to run cooler and featuring a fanless design, the TI250 saves energy and reduces weight.

The **TI500** inverter produces **500 watts of wall-outlet power** from the aircraft's 28 VDC input. Lighter and 30% smaller than competing inverters, the TI500 has the same connector and footprint as legacy designs and features overload and short-circuit protection up to 150% of the rated load.



TI500
Direct replacement
for KGS SS50

MODEL NO.	PART NO.	CONFIGURATION	LIST PRICE
TI10*	MD26-28	10 VA, 11–40 VDC input, 26 VAC output, 400 Hz, Sine wave	\$796
TI250	6430250-1	250 VA, 20–36 VDC input, 115 VAC output, 60 Hz, Sine wave	\$3,545
TI254	6430250-2	250 VA, 20–36 VDC input, 115 VAC output, 400 Hz, Sine wave	\$3,545
TI256	6430250-3	250 VA, 20–36 VDC input, 115/26 VAC output, 400 Hz, Sine wave	\$4,777
TI500	MD50	500 VA, 20–36 VDC input, 115 VAC output, 60 Hz, Sine wave	\$5,165
TI1200	6431200-1	1,200 VA, 20–36 VDC input, 115 VAC output, 60 Hz, Sine wave	\$7,747
TI1202	6431200-3	1,200 VA, 20–36 VDC input, 230 VAC output, 50 Hz, Sine wave	\$8,089
TI1202	6431200-8	1,200 VA, 20–36 VDC input, 240 VAC output, 50 Hz, Sine wave	\$8,089
TI1204	6431200-7	1,200 VA, 20–36 VDC input, 115 VAC output, 400 Hz, Sine wave	\$16,432
TI1502**	6431502-1	1,500 VA, 18–32 VDC input, 30–120 VAC output, 60 Hz, Square wave	Please call
TI2000	6432000-1	2,000 VA, 20–36 VDC input, 115 VAC output, 60 Hz, Sine wave	\$16,057
TI2002	6432000-2	2,000 VA, 20–36 VDC input, 230 VAC output, 50 Hz, Sine wave	\$17,035
TI2004	6432000-4	2,000 VA, 20–36 VDC input, 115 VAC output, 400 Hz, Sine wave	\$16,224

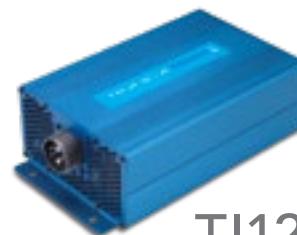
* FAA PMA approved

** Custom configuration not FAA TSO certified

The **TI1200 Series** inverter supplies **1,200 watts** of power to a variety of cabin accessories, galley equipment, avionics, entertainment and aircraft systems. The compact TI1200 Series has the same connector and footprint as legacy designs, plus overload and short-circuit protection up to 150% of the rated load.

The **TI2000 Series** inverter delivers **2,000 watts** of power from the aircraft's 28 VDC system to cabin and galley accessories. Ideal for entertainment systems, personal electronic devices, microwave ovens and high-powered coffee makers, the TI2000 is smaller, lighter and more efficient than the nearest competition.

The **TI2004** inverter can be interconnected in a three-phase configuration to produce **6,000 watts** of power.



TI1200
Direct replacement
for KGS SS120

AC Outlets for True Blue Power Inverters (Page 43)



9018708-1



9018708-2

Light Trays, Magnetometers

Light Trays

Mid-Continent Instruments and Avionics



9015640-2



9016909-14



9016909



6015358-()

PART NO.	CONFIGURATION	LIST PRICE
MD31-6	2-inch, 5V, LED	\$127
MD31-5	2-inch, 5V, LED, Connector	\$127
MD31-4	2-inch, 14V, LED	\$127
MD31-3	2-inch, 14V, LED, Connector	\$127
MD31	2-inch, 28V, LED	\$127
MD31-2	2-inch, 28V, LED	\$127
MD31-1	2-inch, 28V, LED, Connector	\$127
9015640-1	3-inch, 5V, Incandescent (4300 Series)	\$127
9016909-5	3-inch, 5V, LED (4300 Series)	\$127
9015640-10	3-inch, 5V, NVIS (4300 Series)	\$698
9015640-2	3-inch, 14V, Incandescent (4300 Series)	\$127
9016909-14	3-inch, 14V, LED (4300 Series)	\$127
9015640-3	3-inch, 28V, Incandescent (4300 Series)	\$127
7016637	3-inch, 28V, Incandescent, Connector (Cessna)	\$140
9016909	3-inch, 28V, LED (4300 Series)	\$127
9015640-12	3-inch, 28V, NVIS (4300 Series)	\$698
6018634-()	2-inch or 3-inch, 5V, Incandescent	\$140
6015010-()	2-inch or 3-inch, 14V, Incandescent	\$140
6015358-()	2-inch or 3-inch, 28V, Incandescent	\$140



MD32

Magnetometers

Mid-Continent Instruments and Avionics

The MD32 Magnetometer is designed specifically for the Standby Attitude Module (SAM®) MD302, Flex® MD23-3 and Digital Attitude Indicator MD23-342. It delivers independent heading reference without the need for special installation hardware or orientation limitations. This magnetometer's unique mounting flexibility, compact size and convenient cockpit calibration ensure easy, low-cost installation.

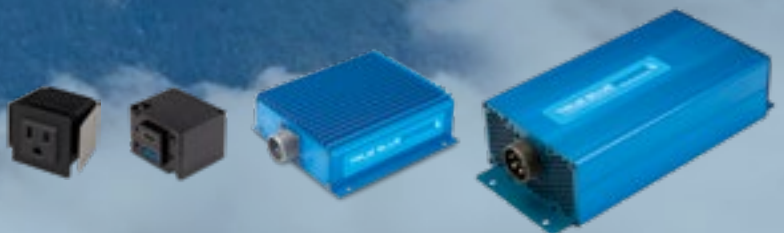
MODEL NO.	PART NO.	CONFIGURATION	LIST PRICE
MD32	6420032-1	Remote magnetometer, 7–32 VDC, ARINC 429 output (For SAM MD302, Flex MD23-3 and Digital Attitude Indicator MD23-342)	\$1,624



Boeing 737

STC Approved

True Blue Power® AC Outlet
True Blue Power® TA202 Series USB Chargers
True Blue Power® TI250 Series Inverter
True Blue Power® TC2000 Converter



Manifold Pressure Gauges, NAV / COM Radios



6111-D.16

Manifold Pressure Gauges

United Instruments

Engineered for durability, these pressure gauges utilize an internal bellows system to measure the absolute pressure of the aircraft engine intake in inches.

PART NO.	CONFIGURATION	LIST PRICE
6111-D.17	10-35 Hg, Single scale (without markings)	\$1,763
6111-D.16	10-50 Hg, Single scale (without markings)	\$1,763



KX 200

NAV / COM Radios

Honeywell

The new Honeywell KX 200 NAV/COM Radio is an easy-to-install, direct replacement for your current KX 155 radio and can substitute other radios using the same tray and connector. The KX 200 is pilot friendly, featuring a high-resolution color LCD, 50-channel memory presets, and is compatible with 14- and 28-volt systems.

PART NO.	CONFIGURATION	LIST PRICE
89000002-120*	KX 200 NAV/COM with GS complete kit, including radio and voltage adapter (14V or 28V) NEW EXCHANGE for KX 155 Core	\$5,050
89000002-120*	KX 200 NAV/COM with GS complete kit, including radio and voltage adapter (14V or 28V)	\$5,200
89000002-121	KX 200 Retrofit adapter NAV/COM with GS, 28V (adapter only)	\$530
89000002-122	KX 200 Retrofit adapter NAV/COM with GS, 14V (adapter only)	\$530
050-01778-0000	KX 155 Install kit with GS crimp*	\$763
050-01778-0001	KX 155 Install kit crimp*	\$710

* When ordering, please indicate whether a 14V or 28V adapter is required.

Outlets, Radars, Remote Relay Units

Outlets, AC True Blue Power®

True Blue Power® AC outlets provide pilots, passengers and crew members with convenient access to power. The three-prong, North American outlet and the Universal outlet can be easily mounted in the cockpit, cabin and galley. Both versions are rated up to 15 amps of power. They are compatible with all True Blue Power inverters.

PART NO.	CONFIGURATION	LIST PRICE
9018708-1	115V, AC, Three Prong	\$501
9018708-2	115–230V, AC, Universal	\$501
9018708-3*	115V, AC, Three Prong, no Pigtail	\$501
9018708-4*	115–230V, AC, Universal, no Pigtail	\$501
7430004-1	STC Kit, Boeing 737, T1250, 2 North American AC outlets	\$11,731
7430004-2	STC Kit, Boeing 737, T1250, 2 Universal AC outlets	\$11,731

* Not FAA PMA approved



9018708-1



9018708-2

Radars Ontic

Utilizing the latest technology, Ontic's digital weather radar systems deliver an accurate, vertical image of a storm and provide the best view available to the pilot to accurately determine its scope.



ART 2000

MODEL NO.	PART NO.	CONFIGURATION	LIST PRICE
ART 2000	071-01519-0101	Digital weather radar system, Radar transceiver, 4.0 kW	Please call
ART 2100	071-01550-0101	Digital weather radar system, Radar transceiver, 6.0 kW	Please call
RDR 2060	071-01550-0201	Digital weather radar system, Radar transceiver, 6.0 kW	Please call

Remote Relay Units

Mid-Continent Instruments and Avionics

These remote-mounted, 24-pole units feature eight nitrogen-filled relays (3 poles per relay) with gold-plated contacts. Ideal for GPS/VOR transfer and audio switching applications, these remote relay units provide unequalled integrity with fail-safe fault monitoring through interlocking of all internal relays.

PART NO.	CONFIGURATION	LIST PRICE
MD41-244	24-pole, 14V, TSO	\$1,831
MD41-248	24-pole, 28V, TSO	\$1,685



MD41-248



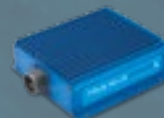
Cirrus G2 Vision Jet

Standard Equipment

SAM® MD302 Standby Attitude Module
True Blue Power® TA202 Series USB Chargers
True Blue Power® TI250 Inverter
True Blue Power® TB17 Lithium-ion Aircraft Battery

Accessory

True Blue Power® TT28-12 Battery Tester/Charger PRO



Standby Attitude Modules

SAM® Standby Attitude Modules, 2-inch, Digital Mid-Continent Instruments and Avionics

Fly with the only digital standby that can be installed horizontally or vertically to fit in the tightest spaces. SAM® is the first certified standby to display attitude, altitude, airspeed, vertical trend, heading and slip information in a flexible 2-inch format. Fly SAM. Land safe.

Available with FAA-certified lithium-ion or nickel-metal hydride emergency battery and customizable to add SSEC for RVSM. Night Vision Imaging System (NVIS) compatible versions are available. Please call for a quote.



selectable
orientation



field
upgradable
software



emergency
battery

MODEL NO.	PART NO.	CONFIGURATION	LIST PRICE
SAM MD302	6420302-1	Digital, 10–32 VDC, Attitude, Altitude, Airspeed, Slip, Black bezel, Lithium-ion battery	\$8,999
SAM MD302	6420302-7	Digital, 10–32 VDC, Attitude, Altitude, Airspeed, Slip, Black bezel, NiMH battery	\$8,999
SAM MD302	6420302-2	Digital, 10–32 VDC, Attitude, Altitude, Airspeed, Slip, Black bezel, (Without battery)	\$8,999
SAM MD302	6420302-4	Digital, 10–32 VDC, Attitude, Altitude, Airspeed, Slip, Gray bezel, Lithium-ion battery	\$8,999
SAM MD302	6420302-6	Digital, 10–32 VDC, Attitude, Altitude, Airspeed, Slip, Black bezel, (For Cirrus SR)	\$8,999
SAM MD302	6420302-8	Digital, 10–32 VDC, Attitude, Altitude, Airspeed, Slip, Gray bezel, NiMH battery	\$8,999
SAM MD302	6420302-5	Digital, 10–32 VDC, Attitude, Altitude, Airspeed, Slip, Gray bezel, (Without battery)	\$8,999
SAM MD302	6420302-3	No display, 10–32 VDC, Remote mounted, ARINC output, (Without battery)	\$8,999
	9017177	Battery pack, Lithium-ion	\$499
	9019120-1	Battery pack, NiMH	\$627
	9017146*	Pitot-static O-ring	\$4

* Included with purchase of SAM® standby attitude modules

SAM® is even smarter with the MD32 Magnetometer!

Specifically designed for SAM® with independent heading reference (Page 40)



MD32

Turn and Slip Indicators, Turn Coordinators



5550-8340N5L

Turn and Slip Indicators, 2-inch

Mid-Continent Instruments and Avionics / General Design

Widely used as standard equipment in the turboprop market, these dependable 2-inch units fit into the tightest panel space. AC brushless rotors offer great reliability.

PART NO.	CONFIGURATION	LIST PRICE
5550-8340N5L	28V, Lighted	\$4,257
MS3106A10SL-3S	Connector, 3-pin	\$102



1234T100-7TZ

Turn and Slip Indicators, 3-inch

Mid-Continent Instruments and Avionics

Proven reliability through HALT testing and OEM use since 1999, it's hard to beat these indicators. With more than one million units produced, they are the choice of more than 15 aircraft companies.

PART NO.	CONFIGURATION	LIST PRICE
1234T100-7TZ	12-32V	\$3,144
1234T100-3TZ*	12-32V, Lighted	\$3,144
MS3106A10SL-3S	Connector, 3-pin	\$102

* Specify lighting voltage and type (LED or incandescent) when ordering



1394T101-7B

Turn Coordinators, 3-inch

Mid-Continent Instruments and Avionics

Engineered for a long service life, the "B" model turn coordinators feature a proven AC rotor powered by a solid-state inverter, creating less heat behind the panel. Utilizing a brushless rotor design, these instruments have top industry ratings of 4,800 hours MTBF. As a direct replacement for most 3-pin turn coordinators, these units are ideal for use in high-performance aircraft and cold-climate applications. All 3-inch turn coordinators operate from 11-32 volts DC for convenience and reliability.

PART NO.	CONFIGURATION	LIST PRICE
1394T101-7B	11-32V, Brushless	\$1,757
1394T101-3B*	11-32V, Brushless, Lighted	\$2,086
1394T101-14RB*	11-32V, Autopilot, Brushless, Tach output, Lighted	\$3,247
MS3106A10SL-3S	Connector, 3-pin	\$102
MS3106A14S-5S	Connector, 5-pin, Autopilot	\$99

* Specify lighting voltage and type (LED or incandescent) when ordering

CERTIFIED

MAX

POWER

USB CHARGERS



The most powerful USB chargers in aviation

Upgrade to the fastest charging, highest power USB charging ports. New **MAX Power Chargers** deliver up to 100 watts per port — that's 7 times more power than traditional chargers. The latest Power Delivery (PD) Technology and device-driven voltage output guarantee your electronics get the maximum power they need. You'll lock in the fastest, most efficient charging possible.

**DATA
PASSTHROUGH**

7X MORE
POWER

**UP TO 100 WATTS
PER PORT**

USB Chargers



USB Chargers True Blue Power®

High Power — Up to 15 watts per port

Pilots and passengers stay charged and connected with high power **TA202 Series** chargers. Single and dual USB-A and USB-C configurations leave a small footprint in the panel or cabin wall. The easy-to-install design requires no external power converters for 10–32 VDC applications. *USB connector kit included with purchase of all USB chargers. Complete list of accessories, page 50.*



USB-A



USB-C



USB-A / USB-A



USB-C / USB-C



USB-C / USB-A

Single Port, High Power

15 watts

3 amps per port

\$211/ea

MODEL NO.	PART NO.	CONFIGURATION
TA202	6430202-9	USB-A, 10–32 VDC in, Rear connector
TA202	6430202-19	USB-A, 10–32 VDC in, Rear connector, Lighted
TA202	6430202-10	USB-A, 10–32 VDC in, Bottom connector
TA202	6430202-20	USB-A, 10–32 VDC in, Bottom connector, Lighted
TA202	6430202-7	USB-C, 10–32 VDC in, Rear connector
TA202	6430202-17	USB-C, 10–32 VDC in, Rear connector, Lighted
TA202	6430202-8	USB-C, 10–32 VDC in, Bottom connector
TA202	6430202-18	USB-C, 10–32 VDC in, Bottom connector, Lighted

Dual Port, High Power

15 watts / 15 watts

3 amps per port

\$423/ea

MODEL NO.	PART NO.	CONFIGURATION
TA202	6430202-5	USB-A, 10–32 VDC in, Rear connector
TA202	6430202-15	USB-A, 10–32 VDC in, Rear connector, Lighted
TA202	6430202-6	USB-A, 10–32 VDC in, Bottom connector
TA202	6430202-16	USB-A, 10–32 VDC in, Bottom connector, Lighted
TA202	6430202-3	USB-C, 10–32 VDC in, Rear connector
TA202	6430202-13	USB-C, 10–32 VDC in, Rear connector, Lighted
TA202	6430202-4	USB-C, 10–32 VDC in, Bottom connector
TA202	6430202-14	USB-C, 10–32 VDC in, Bottom connector, Lighted
TA202	6430202-1	USB-C / USB-A, 10–32 VDC in, Rear connector
TA202	6430202-11	USB-C / USB-A, 10–32 VDC in, Rear connector, Lighted
TA202	6430202-2	USB-C / USB-A, 10–32 VDC in, Bottom connector
TA202	6430202-12	USB-C / USB-A, 10–32 VDC in, Bottom connector, Lighted

USB Chargers True Blue Power®

MAX Power — Up to 100 watts per port



MAX Power TA360 Series chargers feature the latest USB Power Delivery (PD) Technology and intelligent, device-driven voltage output. They provide up to 100 watts per PD port — **7 times more power** — than traditional chargers, and are a drop-in replacement for True Blue Power TA102 and TA202 Series charging ports. *USB connector kit included with purchase of all USB chargers. Complete list of accessories, page 50.*

Single Port, MAX Power

60 watts		3 amps per port	\$349/ea
MODEL NO.	PART NO.	CONFIGURATION	
TA360	6430360-7	USB-C PD, 22–32 VDC in, Rear connector	
TA360	6430360-17	USB-C PD, 22–32 VDC in, Rear connector, Lighted	
100 watts		5 amps per port	\$499/ea
MODEL NO.	PART NO.	CONFIGURATION	
TA360	6430360-27	USB-C PD, 22–32 VDC in, Rear connector, Starlink® Mini Compatible*	
TA360	6430360-37	USB-C PD, 22–32 VDC in, Rear connector, Starlink® Mini Compatible,* Lighted	
100 watts		5 amps per port	\$599/ea
MODEL NO.	PART NO.	CONFIGURATION	
TA360	6430360-67	USB-C PD, 22–32 VDC in, Rear connector, Data Passthrough	
TA360	6430360-77	USB-C PD, 22–32 VDC in, Rear connector, Data Passthrough, Lighted	



USB-C PD



Dual Port, MAX Power

60 watts / 60 watts		3 amps per port	\$698/ea
MODEL NO.	PART NO.	CONFIGURATION	
TA360	6430360-3	USB-C PD, 22–32 VDC in, Rear connector	
TA360	6430360-13	USB-C PD, 22–32 VDC in, Rear connector, Lighted	
60 watts / 15 watts		3 amps per port	\$548/ea
MODEL NO.	PART NO.	CONFIGURATION	
TA360	6430360-1	USB-C PD / USB-A, 22–32 VDC in, Rear connector	
TA360	6430360-11	USB-C PD / USB-A, 22–32 VDC in, Rear connector, Lighted	
100 watts / 15 watts		5 amps per port	\$698/ea
MODEL NO.	PART NO.	CONFIGURATION	
TA360	6430360-21	USB-C PD / USB-A, 22–32 VDC in, Rear connector, Starlink® Mini Compatible*	
TA360	6430360-31	USB-C PD / USB-A, 22–32 VDC in, Rear connector, Starlink® Mini Compatible,* Lighted	



USB-C PD



USB-C PD / USB-A

* True Blue Power USB chargers are not compatible with Starlink® manufactured USB-C to barrel jack cables. A third-party validated cable is required.



amazon.com

Shop Required Third-Party Validated Cables to Power Starlink® Mini Antenna

USB Charger Accessories



9010361-1



9010361-4



9010360-1



9017947



9019702



9017958



9019384-3



9019384-4

USB Charger Adapters

PART NO.	CONFIGURATION	LIST PRICE
9010360-1	Single port, Right angle adapter (TA360 only)	\$150
9010361-1	Single Port, Multi-unit DZUS mount adapter, Black	\$120
9010361-2	Dual Port, Multi-unit DZUS mount adapter, Black	\$140
9010361-3	Single Port, Multi-unit DZUS mount adapter, Gray	\$120
9010361-4	Dual Port, Multi-unit DZUS mount adapter, Gray	\$140
9017947	Dual port, Instrument adapter plate, Rear mount	\$40
9019702	Single port, Beechcraft yoke USB adapter, Rear mount (TA202 only)	\$199
9019703	Single port, Cygnet yoke USB adapter, Rear mount (TA202 only)	\$199

USB Charger Connector Kits

PART NO.	CONFIGURATION	LIST PRICE
9017960*	USB Connector kit	\$20

* Included with purchase of all USB chargers

USB Charger Dust Covers

PART NO.	CONFIGURATION	LIST PRICE
9019313-1	USB Dust cover, Black	\$3
9019313-2	USB Dust cover, Gray	\$3

USB Charger Faceplates

PART NO.	CONFIGURATION	LIST PRICE
9017897	Dual port, Standard square, Front mount (TA202 only)	\$60
9017958	Dual port, Small square, Rear mount	\$60
9019351-1	Single port, Rectangular, Rear mount	\$60
9019384-3	Single port, Circular, Rear mount	\$20
9019384-4	Dual port, Circular, Rear mount	\$20



Easy circular USB charger installation

Vertical Speed Indicators, 3-inch, Analog

United Instruments

Providing an accurate indication of rate of change in altitude, these versatile vertical speed indicators (VSI) offer several configurations and have been selected as standard equipment by aircraft manufacturers worldwide. IVSI units provide Instantaneous Vertical Speed Indication.

PART NO.	CONFIGURATION	LIST PRICE
7000C.31	0–2,000 FPM	\$1,368
7000C.91*	0–2,000 FPM, Lighted	\$1,848
7030C.27	0–3,000 FPM	\$1,368
7030C.99*	0–3,000 FPM, Lighted	\$1,848
7040C.28	0–4,000 FPM	\$1,368
7060C.46	0–6,000 FPM	\$2,318
7130C.41	0–3,000 FPM, IVSI	\$4,585

* Specify lighting voltage and type (LED or incandescent) when ordering



7030C.27



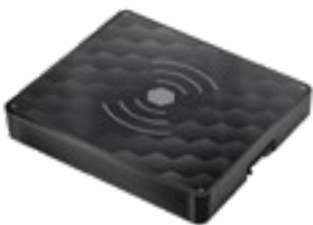
7130C.41

Wireless Chargers



Wireless Chargers True Blue Power®

True Blue Power Wireless Chargers deliver up to 15 watts of power to smartphones, wireless headphones and other personal electronics that support wireless charging, including MagSafe® devices. TWC15 Series Wireless Chargers are Qi and Qi2 compliant and can be mounted in a variety of locations throughout the aircraft.



6430015-21

MODEL NO.	PART NO.	CONFIGURATION	LIST PRICE
TWC15	6430015-21	15 watts out, 12-32 VDC in, Single coil, Compact	\$698
TWC15	6430015-22	15 watts out, 12-32 VDC in, Single coil, Compact, MagSafe® compatible	\$698



Certified MagSafe® Compatible Quick Charging

WHERE TO BUY

Mid-Continent Instruments and Avionics and True Blue Power products are available at more than 8,000 avionics dealers, worldwide.



Scan to locate a
Dealer near you

 **MidContinent**[®]
INSTRUMENTS+AVIONICS

TRUE BLUE POWER 



mcico.com

truebluepowerusa.com

Kansas

9400 East 34th Street North
Wichita, Kansas 67226 USA
Tel 316.630.0101
Tel 800.821.1212
Fax 316.630.0723
mcia@mcico.com

California

9722 Topanga Canyon Boulevard
Chatsworth, California 91311 USA
Tel 818.786.0300
Tel 800.345.7599
Fax 818.786.2734
mcia@mcico.com



Follow us for our latest news, announcements and videos.